

East Coventry Elementary School 2024-25 Building Goals



Student Learning and Growth

Math:

- At least 80% of student in grades 1-6 will score proficient on IXL Spring benchmark assessment. Students who are not at benchmark will make 125% of one year's growth.

Reading:

- Reading: 80% of students in grades K – 2 will reach benchmark as measured by the Aimsweb Universal Assessments. Students who are not at benchmark will make 125% of one year's growth.
- The median score for students in grade 3-6 will be at least 70% as measured by the Linkit! Form C. Students who are not at benchmark will make 125% of one year's growth.
- Support the development and implementation of a pilot ELA program.

Full Day Kindergarten:

- Continue to work with the Assistant Superintendent, supervisors and staff to plan and implement the full day kindergarten program for the 2025-26 school year.



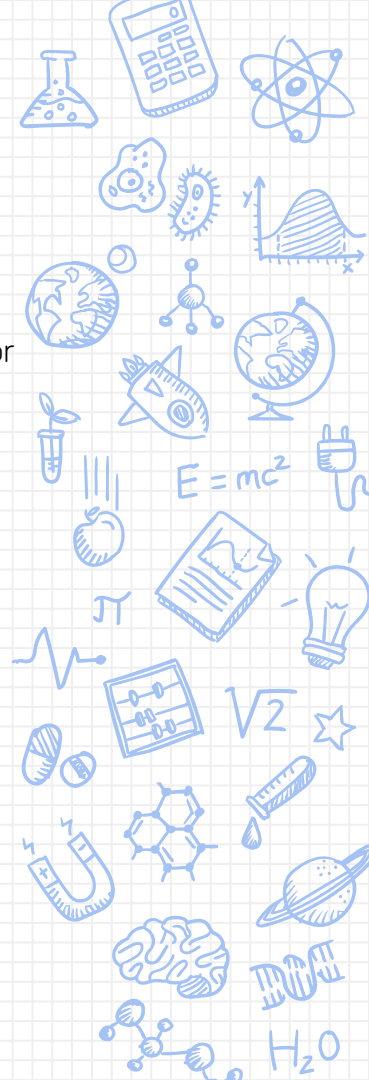
Safe and Caring School

Multi Tiered Support System (MTSS):

- Continue to refine the structure of the MTSS process as it relates to data oversight and interventions for attendance, discipline, academic, and social/emotional.
- Adopt and apply the District's mental health framework.

Positive Behavior and Intervention System (PBIS):

- Maintain a PBIS program that includes tier I and tier II interventions that are aligned to MTSS.



4