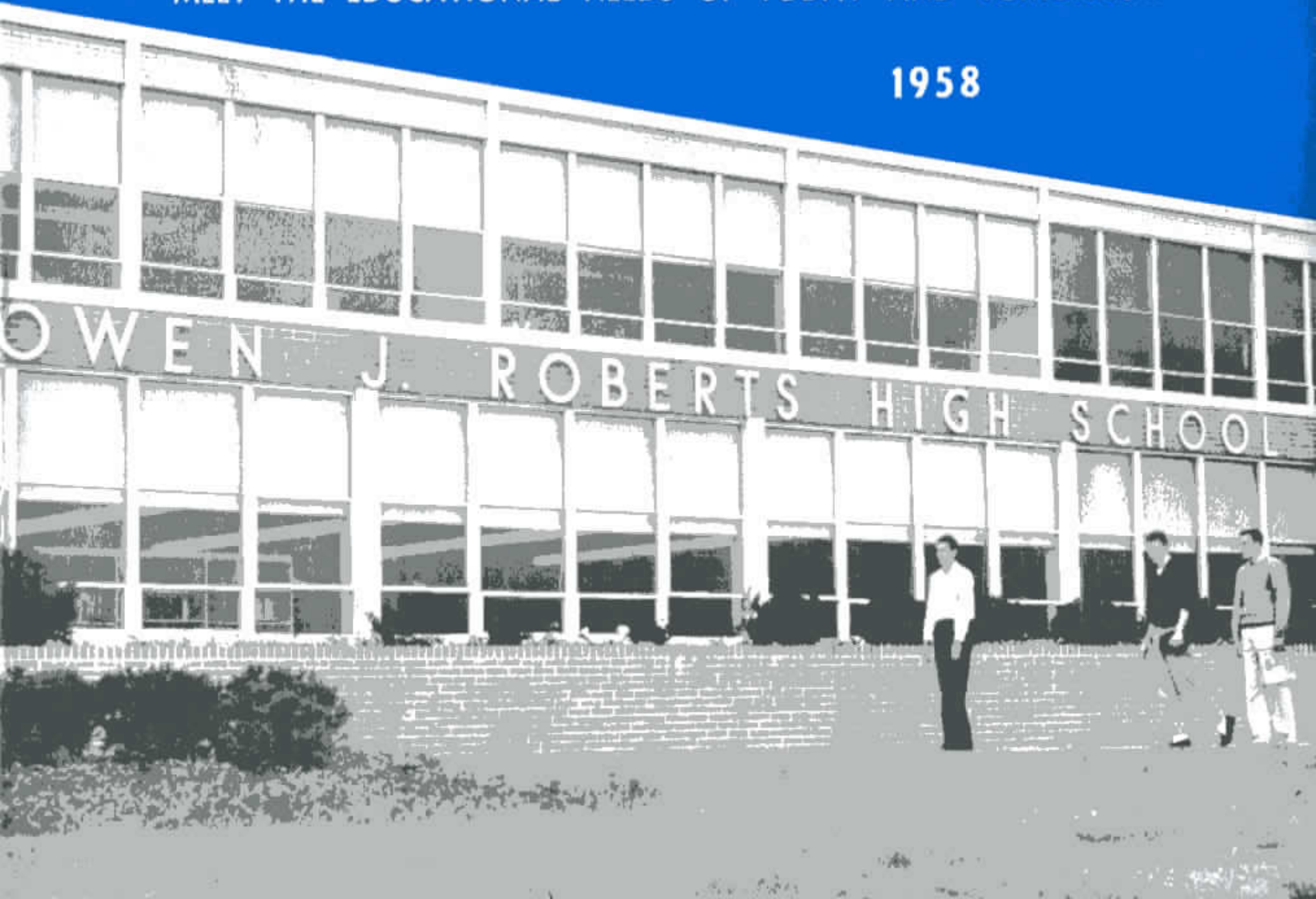


SEVEN NORTHERN CHESTER COUNTY TOWNSHIPS
MEET THE EDUCATIONAL NEEDS OF TODAY AND TOMORROW

1958



In Honor of

OWEN J. ROBERTS

One of the great men of our time, Justice Owen J. Roberts, lived quietly among us. A great jurist, for fifteen years a Justice of the Supreme Court of the United States, Owen J. Roberts was, nevertheless, primarily interested in the education of youth. He saw in this education of youth — the training of young people to assume responsibility—the hope for a promising future for America and security for the world.

Owen J. Roberts has gone from us, but his lessons in example and precept have not passed with him.

Out of this heritage will emerge the result of that humility, the culmination of that faith and the realization of that hope.



Designed for educating the youth of our area . . .

OWEN J. ROBERTS JUNIOR-SENIOR HIGH SCHOOL

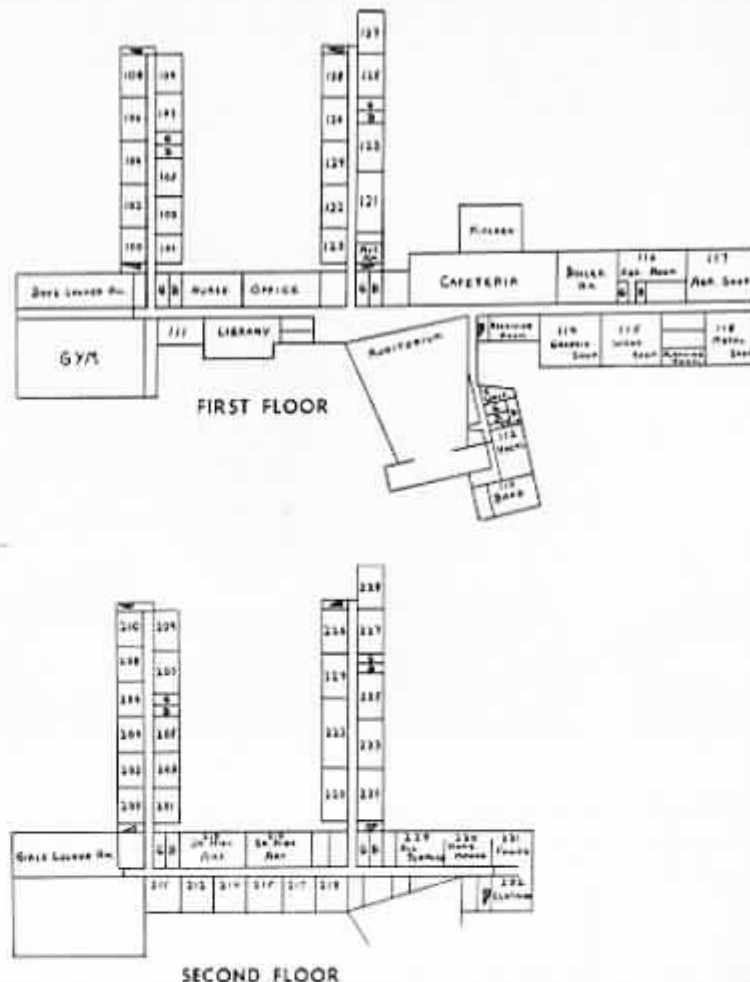
Education today requires tailored facilities which are flexible and easily expandable, a school plant designed for a diversified educational program. Beauty and facilities enhance the desire for education. Through the contributions of the citizens of this area Owen J. Roberts High School stands ready to serve the needs of youth.

Our main philosophy is to provide each boy and girl with every opportunity to advance his education as far as he is capable, and as far as his ambition will carry him, and at the same time to uphold the dignity of each individual.

The school was organized with the main emphasis on the academic subjects commonly called the "three r's". Two main wings of the school, the Senior high school wing and the Junior high school wing were carefully planned and provided with proper and adequate equipment to insure that the boys and girls would have every opportunity to obtain a thorough basic foundation through academic experience.

Since the beginning of the Owen J. Roberts high school, our school program has endeavored to provide the most favorable atmosphere for learning for boys and girls who have a serious interest in education by establishing a limited program involving homogenous grouping. This effort has been expanded by the establishing of control groups in grades 7 through 12 wherever and whenever practicable. These groups include the pupils who are rapid learners or high achievers and those who take longer than the normal time to arrive at their fullest educational capacities.

The most recent addition to the school curriculum is a remedial reading program for the purpose of helping students of average aptitude to capitalize on their abilities by removing their handicaps. The need for this type of education is evident and the facilities are now available for your children to participate in this program.



Owen J. Roberts High School Floor Plan

SIZES AND CAPACITIES

Site	53 acres
Practice Field:—	
Football, baseball, hockey, soccer, tennis, basketball	
Auditorium: seats	1000
Cafeteria: seats	550
Library: seats	85
Gymnasium: seats	900
Parking lots: cars	200
Pupil capacity	1616

ADMINISTRATION



SUPERVISING PRINCIPAL

Paul H. Grim discussing administrative problems with his Secretary, Miriam D. Hauser, and Clifford J. Brey.

HIGH SCHOOL PRINCIPAL

Carryl E. Stauffer



JUNIOR HIGH SCHOOL PRINCIPAL

Charles W. Duffenhofer



GUIDANCE COUNSELORS

Senior High — Harry W. Mengel

Junior High — James W. Kelz



RECEPTIONIST

Helen W. Garvine





BUSINESS MANAGER

Charles K. Given and Secretary - Belva E. Kulp



OFFICE STAFF

Left to right: Miriam D. Hauser, Belva E. Kulp and Helen W. Garvine

THE FACULTY

First row, left to right: Victor A. DiGiosia, Doris M. Hunter, Marguerite W. Kline, Margaret M. Reithour, Harry W. Mengel, Clifford J. Brey, Charles W. Duttonhofer, Paul H. Grim, Carryl E. Stauffer, James W. Kelz, Robert R. Heimelbach, Joseph H. Edwards, Jr., Henry J. Bernat, Louis W. Buckwalter.

Second row, left to right: John B. DeVincentis, Elizabeth S. Yocom, Helen M. Heimel, Lucille Ann Powell, Sophia S. Lebaris, Ella M. Engel, Joseph C. Hahn, John P. Shelling, William T. Given, Stanley W. Seitzinger, Alvin S. Alderfer, Grace W. Finkbinder, Helen C. Mengel, Cameron S. Myers, Jr.

Third row, left to right: Clare K. Lane, Margery J. Kelz, Doris R. Snyder, Anna C. Trege, Marian K. Machmer, Vera B. Stricker, Esther C. Clark, Edna G. Shinehouse, Ruth E. Pennypacker, Agnes M. Manser, Irma A. Liggett, Stanley L. Oluniewski, Richard C. Strange, Ramon G. DeTato.

Fourth row, left to right: Ruth Ann K. DeRenzo, Jacquelyn E. Eggert, Jacqueline M. Desmond, Orpha W. Miller, Miriam K. Kolle, Hannah L. Roberts, Walter W. Longenecker, Robert J. Halley, Glenn C. Pounds, Homer J. Darlington, Harry R. Stine, Jr., Neal R. Burtner, Coletan Galambos, Stewart B. Elliott.

Fifth row, left to right: Robert W. Mosteller, Stanley Springer, Robert H. Lloyd, Marlin Horne, Theodore P. Pibus, Louis S. Gaston.

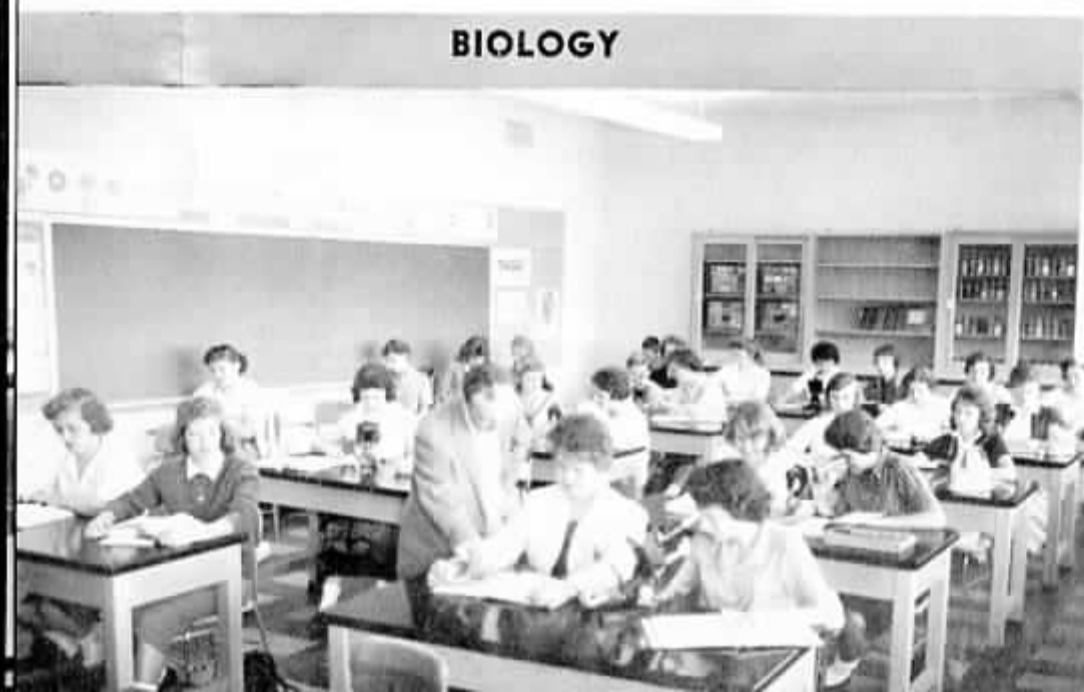




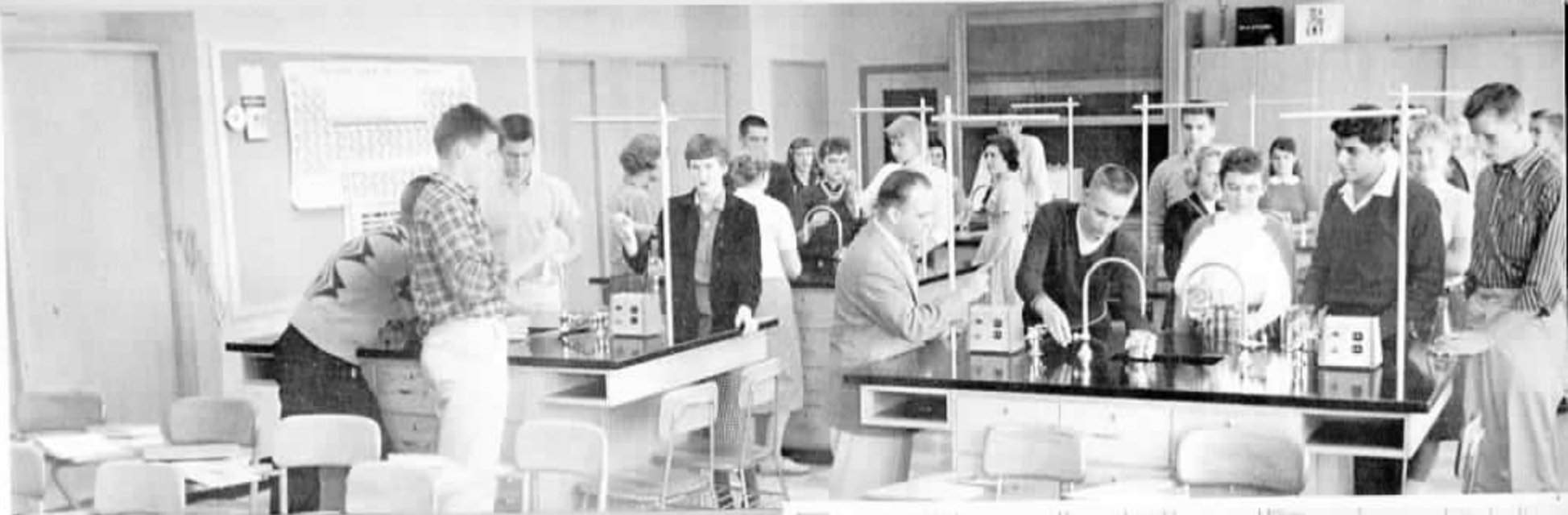
GENERAL SCIENCE



PHYSICS



BIOLOGY



CHEMISTRY

AGRICULTURE SHOP



AGRICULTURE



ART



MUSIC



WOODWORKING



MECHANICAL DRAWING



METAL WORKING



DRIVER TRAINING









BUSINESS EDUCATION

Our Business Education Department provides opportunities for the students to equip themselves to take positions of responsibility in the business world. Shown on this page are views of the bookkeeping, business machines and typing rooms.





The homemaking laboratory, a practice home within the school, provides the opportunity to experience the activities which are integral parts of family life. The lessons these girls learn are preparing them to organize and manage the homes and rear the families of our community.

HOME MAKING



PHYSICAL EDUCATION



HEALTH SUITE



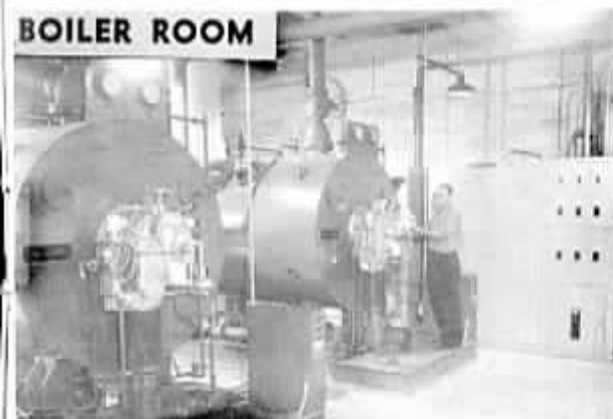
AUDITORIUM



TEACHERS' LOUNGE



BOILER ROOM



KITCHEN



CAFETERIA



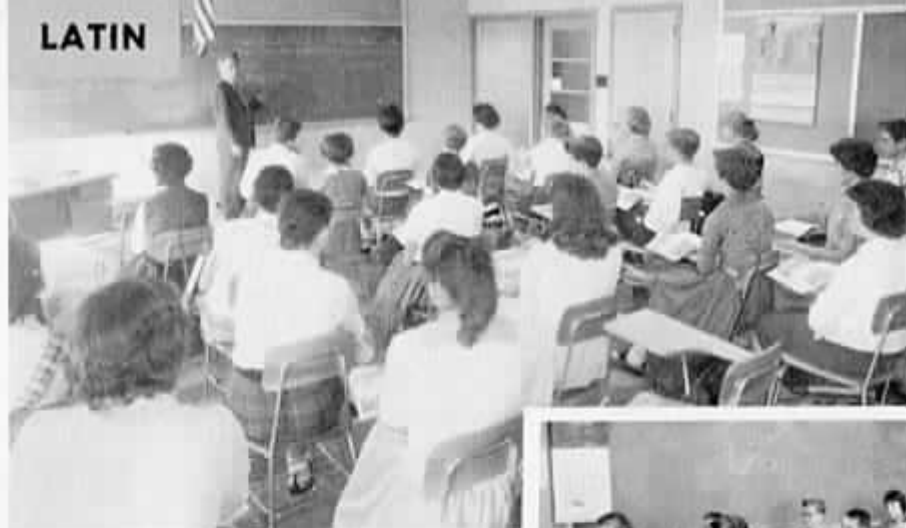


ENGLISH

CLASS ROOMS FOR BASIC EDUCATION

The curriculum adopted by the Joint School Board in 1955 includes college-bound academic course, academic course for those not intending to prepare for college, business education, industrial arts and vocational agriculture and vocational homemaking.

LATIN



GEOGRAPHY



MATHEMATICS



Proper provisions for teaching the basic fundamentals of education are provided for by adequate classrooms—well lighted, well ventilated, well heated — and equipped to meet the requirements of the subject taught.

THE LIBRARY

The school library, the hub of our educational program, is a storehouse of knowledge.



NORTHERN CHESTER COUNTY JOINT SCHOOL BOARD

EAST COVENTRY TOWNSHIP

Harry L. Brownback
Harold R. Diffenderfer
Frank E. Elliott
J. Earl Pennypacker
John L. Keeley

S. Harvey Kulp, Sr.
William H. McGlaughlin

EAST VINCENT TOWNSHIP

Russell T. Latschaw
Edwin I. Walters
Oliver W. Mosteller
Paul K. Detwiler
Muriel C. Philson

H. Emmett Latschar
Robert H. Potts, Sr.*

EAST NANTMEAL TOWNSHIP

T. Strickland Guest
Klaus P. Hochschwender
Leonard H. Cadwell
Jane S. Cadmus
Ada M. Wilson

Charles A. Garvine
Lewis E. Mourar

NORTH COVENTRY TOWNSHIP

E. Gilbert Stauffer
Francis M. Wampler
Clarence A. Yocom
Harry H. Bickel
Raymond R. Hohl

Miller C. Long
Edward E. Weldner



First row, left to right: T. Strickland Guest, Leonard H. Cadwell, Frank E. Elliott, Harry C. Symons, Raymond E. Prizer, Paul K. Detwiler.
Second row, left to right: Francis M. Wampler, Clarence A. Yocom, Raymond R. Hohl, Elizabeth S. Williams, Caroline H. Brown, I. Newton Evans, Jr., Pierre C. Fraley.
Third row, left to right: Oliver W. Mosteller, Russell T. Latschaw, Muriel C. Philson, Edwin I. Walters, Homer S. Sweisford, Joseph J. Bodor, Harold R. Diffenderfer.
Fourth row, left to right: Klaus P. Hochschwender, Ada M. Wilson, Claire L. Mann, Lowell F. Kratz, William M. Hall, Laura Wohltmann, J. Earl Pennypacker, Harry L. Brownback.
Missing: John L. Keeley, Jane S. Cadmus, E. Gilbert Stauffer, Harry H. Bickel, W. Reeve Noble, George M. Burnley, William W. Madden.

*Deceased

SOUTH COVENTRY TOWNSHIP

Harry C. Symons
Claire L. Mann
Raymond E. Prizer
Homer S. Sweisford
Joseph J. Bodor

Dorothy S. Detwiler

WARWICK TOWNSHIP

Laura Wohltmann
W. Reeve Noble
Lowell F. Kratz
William M. Hall
William W. Madden

Merrill L. Mordan
J. Clair Boens
George R. James
Albert P. Painter

WEST VINCENT TOWNSHIP

George M. Burnley
I. Newton Evans, Sr.
Elizabeth S. Williams
Caroline H. Brown
Pierre C. Fraley

Sarah F. Pyle
Lewis F. Weaver

SPECIAL JOINT SCHOOL BOARD COMMITTEES FOR 1958

Executive Committee

Paul K. Detwiler
Harry C. Symons
Caroline H. Brown
Frank E. Elliott
Merrill L. Mordan

Teachers' Committee

Claire L. Mann, Chairman
Pierre C. Fraley
Clarence A. Yocom
Harry C. Symons

Building Committee

Russell T. Latschaw, Chairman
E. Gilbert Stauffer
Harry L. Brownback
T. Strickland Guest
Lowell F. Kratz
George M. Burnley
Homer Sweisford
Paul K. Detwiler

Playground and Athletics

Francis M. Wampler, Chairman
John L. Keeley
Homer S. Sweisford
Klaus P. Hochschwender
Merrill L. Mordan

Equipment and Furniture Committee

Harold R. Diffenderfer, Chairman
Harry H. Bickel
Oliver W. Mosteller
Paul K. Detwiler

Dedication and Cornerstone Committee

Raymond R. Hohl, Chairman
Muriel C. Philson
Jane S. Cadmus
Merrill L. Mordan

Transportation Committee

W. Reeve Noble, Chairman
Harry H. Bickel
Leonard H. Cadwell
Frank E. Elliott

Cafeteria Committee

Raymond E. Prizer, Chairman
Laura Wohltmann
Elizabeth S. Williams
William Hall
Caroline H. Brown

Budget and Finance Committee

E. Gilbert Stauffer, Chairman
Ada M. Wilson
Oliver W. Mosteller
Frank E. Elliott

BUILDING COSTS

Structure Cost	\$2,314,533.00
Site Cost	40,000.00
General Contractor	1,469,576.00
Heating and Ventilating Contract	254,425.00
Plumbing Contract	152,448.00
Electrical Contract	233,250.00
Architect's Fee	138,872.00

Movable Furniture & Equipment	185,000.00
Bond Discount	55,977.00
Contingencies	69,218.00
School Authority Bond	2,820,000.00
Annual Rental	166,100.00
Construction Cost per Pupil	1,626.48

NORTHERN CHESTER COUNTY JOINT SCHOOL AUTHORITY

NORTHERN CHESTER COUNTY JOINT SCHOOL AUTHORITY

Left to right: D. Clarke Sautter, Solicitor; A. Erwin Colver, Treasurer; John P. Eldridge, Member; H. Paul Gant, Assistant Secretary; Samuel W. Morris, Secretary; George H. Philson, Assistant Treasurer; Orville F. Haas, Chairman. Missing: William S. Jones.

Owen J. Roberts*, Stanton Colt Kelton*

*Deceased



The Dedication Brochure Committee wishes to thank the Architects, the Contractors, the Suppliers and all other Patrons of this brochure for their generous contribution.

CONTRACTORS

Architects & Engineers
Sanders & Thomas Associates
Pottstown, Pa.

General Construction
Dominic Maurer, Inc.
Reading, Pa.

Electrical
Keystone Engineering Corp.
Reading, Pa.

Plumbing
Modern Heating & Ventilating Co.
Philadelphia, Pa.

Heating & Ventilating
Crouse Company, Inc.
Linfield, Pa.

Sewage Disposal System
M. S. Eisenhart, Inc.
York, Pa.

Science Laboratory Equipment
Kewaunee Manufacturing Co.
Philadelphia, Pa.

Test Borings
Sprague & Henwood, Inc.
Philadelphia, Pa.

Homemaking & Art Room
Casework
Coppes, Inc.
Nappanee, Indiana

Oliver Kitchens, Inc.
Philadelphia, Pa.

Well Drilling
I. N. Petersheim & Son
Morgantown, Pa.

Library Equipment
C. M. Eichenlaub Co.
Philadelphia, Pa.

Auditorium Chairs
R. A. Wagner Co.
Quakertown, Pa.

Stage Equipment
Pittsburgh Stage, Inc.
Pittsburgh, Pa.

SUB-CONTRACTORS

W. S. Antrim & Son
Pottstown, Pa.

Benrae Iron Works
Morton, Pa.

Berklin Roofing & Sheet Metal
West Reading, Pa.

E. J. Breneman, Inc.
Pottstown, Pa.

Bush Brothers
Royersford, Pa.

D. B. Diefenderfer & Bro.
Mt. Penn, Pa.

J. H. Eurell Company
Lansdowne, Pa.

Farr Nursery Company
Womelsdorf, Pa.

Federal Hardwood Floor Company
Philadelphia, Pa.

Penetra, Inc.
Philadelphia, Pa.

Fred Fielding
Norristown, Pa.

Fremmeyer & Company
Philadelphia, Pa.

Lyon Metal Products
Philadelphia, Pa.

A. M. Masters & Sons
Pen Argyl, Pa.

Merritt Lumber Yards, Inc.
Pottstown, Pa.

W. M. Moyer Company
Quakertown, Pa.

Reading Metal Craft Company
Reading, Pa.

Ted Smith Electric Company, Inc.
Reading, Pa.

Springless Shades, Inc.
Reading, Pa.

Wayne Iron Works
Wayne, Pa.

FURNITURE AND EQUIPMENT CONTRACTORS

Admiral Equipment Company
New York, N. Y.

American Type Founders
Philadelphia, Pa.

American Wood Type Mfg. Co.
Long Island City, N. Y.

Auto Parts Company
Pottstown, Pa.

Automatic Voting Machine Corp.
Jamestown, N. Y.

Bechtel's Sport Shop
Pottstown, Pa.

Bellevue Surgical Supply Co., Inc.
Reading, Pa.

Martin J. Benedict Co.
Philadelphia, Pa.

Breeders Equipment Company
Flourtown, Pa.

N. Brittingham & Sons
Philadelphia, Pa.

Brodhead-Garrett Company
Cleveland, Ohio

Business Machines & Equip. Co.
West Chester, Pa.

Carpenters Machinery Company
Philadelphia, Pa.

Central Scientific Company
Mountainside, N. J.

Collins Business Machines, Inc.
Norristown, Pa.

Comptometer Corporation
Philadelphia, Pa.

Cotterel Company
Harrisburg, Pa.

Depler-Whiting, Inc.
Sinking Spring, Pa.

Delta Equipment Company
Philadelphia, Pa.

Dietaphone Corp.
Reading, Pa.

W. F. Dougherty & Sons
Philadelphia, Pa.

Paul D. Dougherty Company
Merchautville, N. J.

C. M. Eichenlaub Company
Philadelphia, Pa.

Equipment & Furniture Corp.
Coushock, Pa.

Donald L. Erb
Phoenixville, Pa.

J. Fegely & Son Hardware Co.
Pottstown, Pa.

D. M. Feldman
Norristown, Pa.

Fitzpatrick & Walsh Company
Philadelphia, Pa.

Foster Type & Equipment Co.
Philadelphia, Pa.

Galer & Hults, Inc.
Philadelphia, Pa.

General Electric Appliances Co.
Philadelphia, Pa.

L. B. Herr & Son
Lancaster, Pa.

Wm. G. Hintz, Inc.
Reading, Pa.

Oscar H. Hirt
Philadelphia, Pa.

Philip V. Hugues & Son
Philadelphia, Pa.

Industrial Steel Equipment Co.
Philadelphia, Pa.

International Business Mach. Corp.
Chester, Pa.

John W. Koplinger & Son
Audubon, Pa.

Albert A. Knecht, Inc.
Philadelphia, Pa.

H. C. Korner Company
Reading, Pa.

J. P. Lillay & Son
Harrisburg, Pa.

Lowe and Campbell
Philadelphia, Pa.

McCoy's School of Music
Norristown, Pa.

Monroe Calculating Mach. Co., Inc.
Reading, Pa.

John P. Morgan Co., Inc.
Philadelphia, Pa.

Murta Appleton Co.
Philadelphia, Pa.

Norristown Music Center
Norristown, Pa.

A. J. Nystrom & Co.
Chicago, Ill.

Risson Press
Pottstown, Pa.

Parent Metal Products, Inc.
Philadelphia, Pa.

Patterson Brothers
New York, N. Y.

Pearson Sporting Goods, Inc.
Philadelphia, Pa.

Ponsell Floor Machine Co.
Philadelphia, Pa.

Power Press Specialists
Philadelphia, Pa.

W. B. Rapp Machinery Co.
Philadelphia, Pa.

Remington-Rand Division of
Sperry Rand Corp.
Philadelphia, Pa.

Royal Uniform Co.
Philadelphia, Pa.

Seaman Mill Supply Co.
West Reading, Pa.

Russel Seery
Philadelphia, Pa.

Singer Sewing Machine Company
Pottstown, Pa.

H. Rents Smale
Pottstown, Pa.

Snellenburgs
Philadelphia, Pa.

Strawbridge & Clothier
Philadelphia, Pa.

F. A. Trexler & Son
East Greenville, Pa.

Van Buskirk & Brothers
Pottstown, Pa.

John Wanamaker
Philadelphia, Pa.

W. M. Welch Mfg. Company
Chicago, Ill.

Weyman Company
Philadelphia, Pa.

Wilke Furniture House
Pottstown, Pa.

Williams, Brown & Earle, Inc.
Philadelphia, Pa.

Wittich's Music House
Reading, Pa.

Zeswitz Music House
Reading, Pa.



OWEN J. ROBERTS HIGH SCHOOL

R. D. 1, POTTSTOWN

CHESTER COUNTY, PENNSYLVANIA